

Important Addresses

Address Scout Home

Pfadihuus
St. Gallerstr. 95
8853 Lachen
+41 55 442 84 50

Post Office

Post Office, Feldstr. 2, 8853
Lachen, +41 55 442 12 05
Opening Hours: Monday to Friday: 7.30
- 12.00 h, 14.00 - 18.00 h, Saturday:
8.00 - 11.00 h

Railway Station

SBB Lachen, Bahnhofplatz 1,
8853 Lachen, +41 55 442 13 40
Opening Hours: Monday to Saturday:
5.00 - 23.30 h, Sunday: 5.20 - 23.30 h

Taxi

+41 55 442 26 26

Pharmacy

Dr. Herbert Bruhin, St. Gallerstr.
7, 8853 Lachen, +41 55 442 13
35

General Practitioners

Walter Theler, Gartenstr. 3,
8853 Lachen, +41 55 442 34 00
Patrick Schiller, Sonnenhofstr. 22,
8853 Lachen, +41 55 442 53 00
Richard Schibli, Biberzeldenstr. 8,
8853 Lachen, +41 55 442 34 24

Medical Emergency Services

144 (emergency line to call an
ambulance)
+41 900 57 32 12 (connects you to
the general practitioner on duty)

Hospital

Regional Hospital Lachen,
+41 55 451 31 11

Drugstores

Peter Dobler, Hint. Bahnhofstr. 7,
8853 Lachen, +41 55 442 13 60
Urs Krähenmann, Herrengasse 3,
8853 Lachen, +41 55 442 14 14

Maps of the Region

For planing outdoor trips, we recommend the following maps of the region:

- 1:25'000: sheet no. 1132 (Einsiedeln)
sheet no. 1133 (Linthebene)
- 1:50'000 sheet no. 236 (Lachen) or 1:50'000, sheet no. 236T
(especially made for hiking)
sheet no. 5011 Zürichsee-Zug)

Welcome to our Scout Home



www.pfadilachen.ch

Renting

Welcome to our newly built Scout Home in Lachen. Our house offers accommodation for up to 50 people, a large lounge for up to 90 people, a well-equipped kitchen including a dishwasher and many things more.

If you plan to rent our house, please get in contact with our caretaker, Guido Rauchenstein v/o Nunzio. He is the person responsible for questions, bookings, maintenance and the hand-over of keys.

Address of Caretaker:

Guido Rauchenstein v/o Nunzio
Oberdorfstr. 61
8853 Lachen

Phone: +41 55 440 88 28
Mobile +41 79 216 39 62
pfadihuus@pfadilachen.ch

Our Scout Home can be rented for single days, weekends as well as entire weeks. Additionally, there is the option of renting only the lounge including kitchen and toilets for single days or evenings. Definitive bookings are accepted no more than 6 months in advance for single nights and no more than 3 months in advance for days or evenings. Bookings can be made either on the internet (www.pfadilachen.ch/huus) or by contacting our caretaker.

Week- and Weekend-Camps

For week- and weekend-camps the entire house including surroundings (excluding the separated part of the house which belongs to the local scout troops) can be rented for 12 Swiss Francs per person and night. Electricity, hot water, heating and phone calls are charged separately. The minimum fee is 350 Swiss Francs for the whole duration of stay.

Lounge, kitchen and toilets

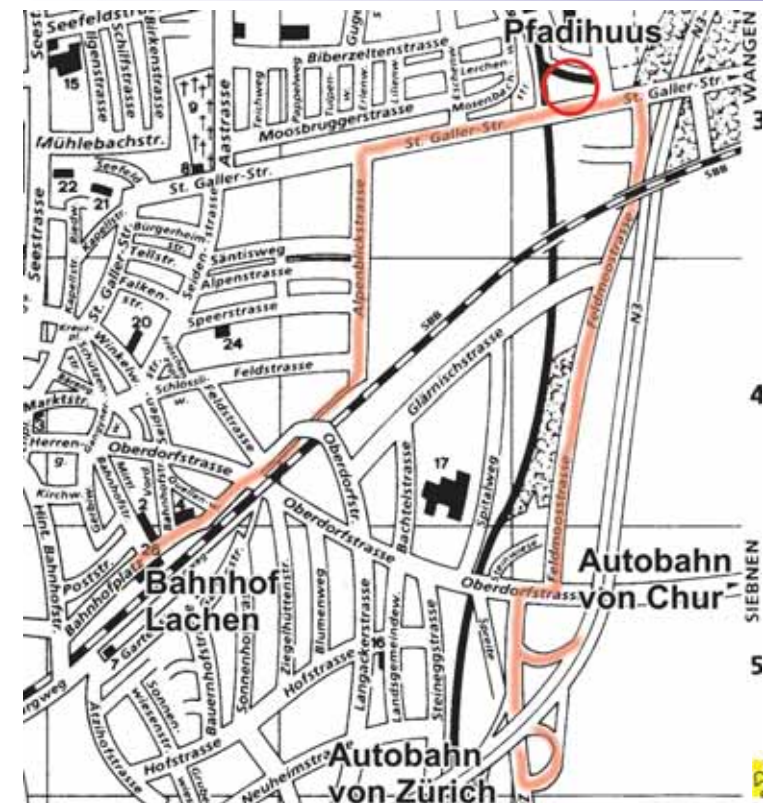
The lounge, including kitchen and toilets, can be rented for 250 Swiss Francs per day/evening all inclusive (local clubs for 200 Swiss Francs).

Activities in the Region

There are many options for varied activities in the region:

- sports activities on the nearby tracks (Peterswinkel), the fitness trail (Buechberg) or with an orienteering map in the woods (Buechberg)
- scouting games and explorations of nature in the woods, the moor and at the Lake of Zurich
- hiking trips in the hills and mountains nearby (Stöcklichrütz, Wägital, Glarnerland)
- swimming in the Lake of Zurich, the local indoor pool or in the famous water park Alpamare (Pfäffikon)
- the children's zoo in Rapperswil
- boat trips on the Lake of Zurich
- additionally, there are excellent leisure and shopping facilities nearby

Local Map



How to get there?

It's easy to reach our Scout Home with public transport.

By train and bus:

- Coming from Zurich, take either the S2 train heading for Ziegelbücke and get off in Lachen or the fast train for Chur and get off in Pfäffikon. Change to the bus heading for either Buttikon, Reichenburg or Siebnen and get off in Lachen. Both trains run at least hourly.
- Coming from Chur, take the fast train heading to Zurich and get off in Ziegelbrücke. Change to the S2 train and get off in Lachen.
- By boat: There is a number of boats on the Lake of Zurich that take you to Lachen. They run from Zurich, Rapperswil or Schmerikon, stopping several times alongside the lake.
- Getting from the railway or the landing stage to our Scout Home takes no more than 15 minutes by foot.

For timetables, please see www.sbb.ch

By car:

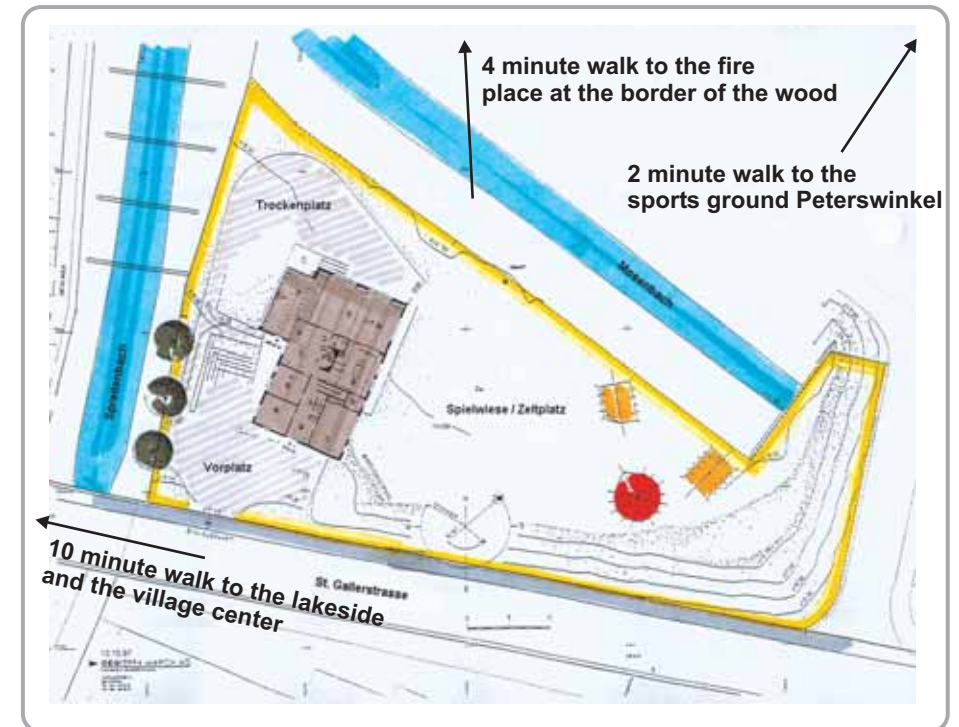
Leave the motorway A3 (connecting Zurich to Chur) at the exit Lachen. At the traffic lights, head towards Wangen / Nuolen. After passing underneath the railway lines (the motorway is directly on your right now), turn left at the next junction. Our scout home is the first building coming up on your right hand side.

Coordinates of the Scout Home:

708 100 / 227 900 (map 1:25'000, sheet no. 1133, Linthebene)

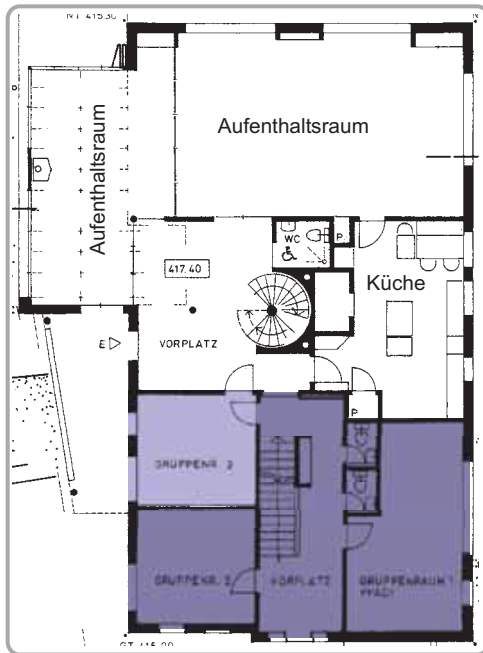
Surroundings

The Scout Home lies in between two brooks, the Mosenbach and the Spreitenbach. On the other side of the house, there is a large lawn, which can be used for playing games and camping. Additionally, there is only a two minutes walk to the sports ground Peterswinkel. The following of its facilities can be used without prior authorisation, if they are not currently used by other groups: children's playground, track and red hard court.



Surroundings of the Scout Home

Ground Floor



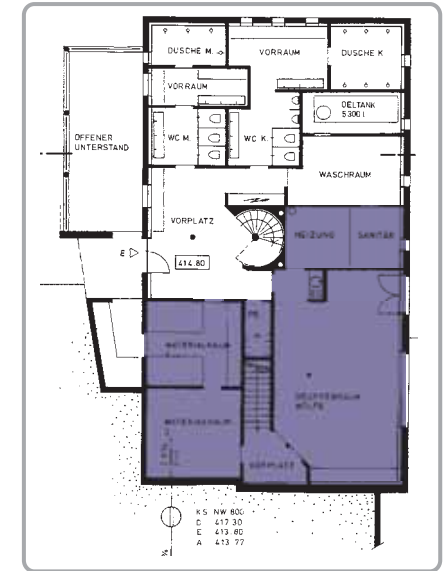
On the ground floor, there are:

- an entrance hall
- a lounge, hosting up to 90 people
- a modern kitchen including a dishwasher
- a toilet and a shower for handicapped people

The ground floor as well as the basement is suitable for wheelchairs. For guests in wheelchairs, the light blue coloured room (no. 3) is converted to a bedroom.

Ground Floor

Basement



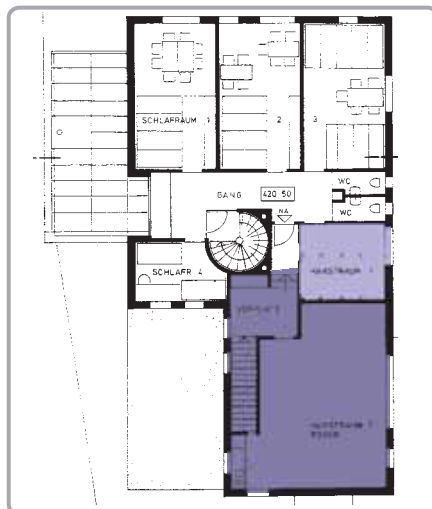
In the basement, there are:

- toilets and wash basins
- 2 shower rooms
- a lockable outdoor storage room that allows drying tents
- an outdoor toilet (not existing on the map)

Basement

The rooms coloured in dark blue belong to the local scout troops and cannot be rented. The light blue colored rooms can be rented on demand.

Upper Floor

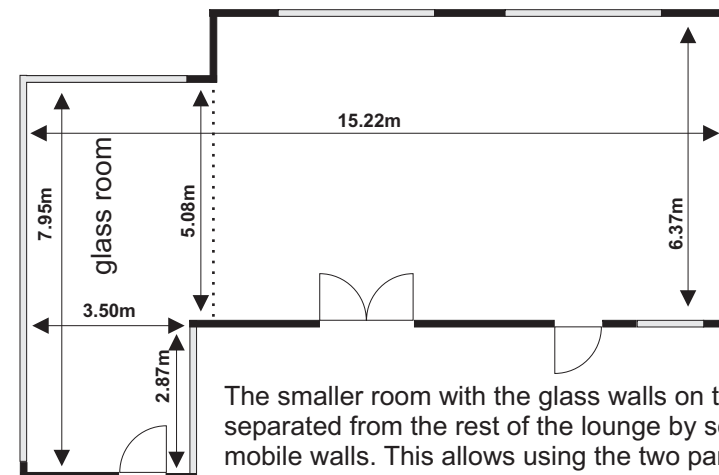


On the upper floor, there are:

- 3 bedrooms with 12, 10 and 10 beds including chairs and a table each
- 1 bedroom with 7 beds
- 2 toilets
- if needed, there is space for up to 15 additional beds

Upper Floor

Measures of the lounge



The smaller room with the glass walls on the left can be separated from the rest of the lounge by soundproof, mobile walls. This allows using the two parts on the lounge separately.